



TACONIC CONTEMPORARY



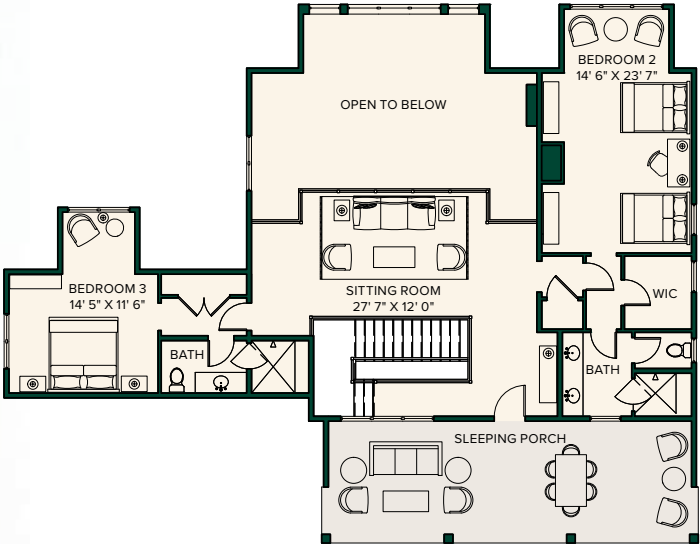
The cottage-style exterior of the Taconic opens to the grand stair hall of this five-bedroom, five-and-a-half-bath multilevel residence. Adding to the drama, an impressive double-height great room looks out to a broad terrace and panoramic valley views. The upper level features a sitting room and additional bedrooms, as well as a sleeping porch, while the lower level centers around a family room designed for entertaining inside and out.

FLOOR PLAN

Taconic Contemporary



MAIN LEVEL



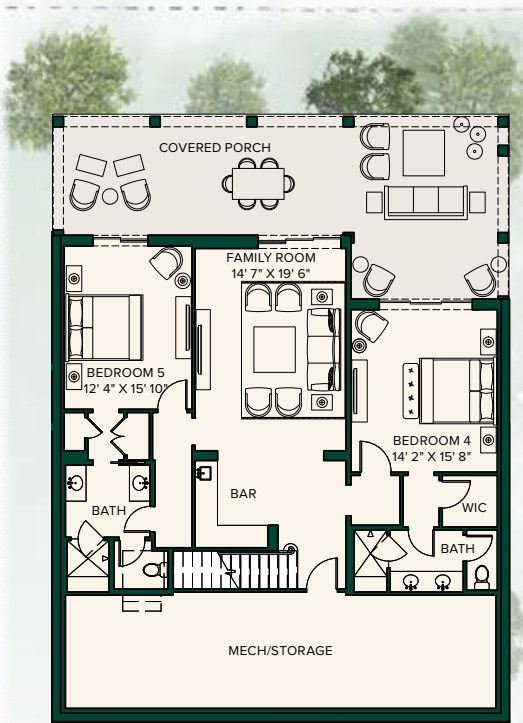
UPPER LEVEL

LAYOUT	MAIN	UPPER
Bedrooms	1	2
Bathrooms	1	2
Half Bathrooms	1	

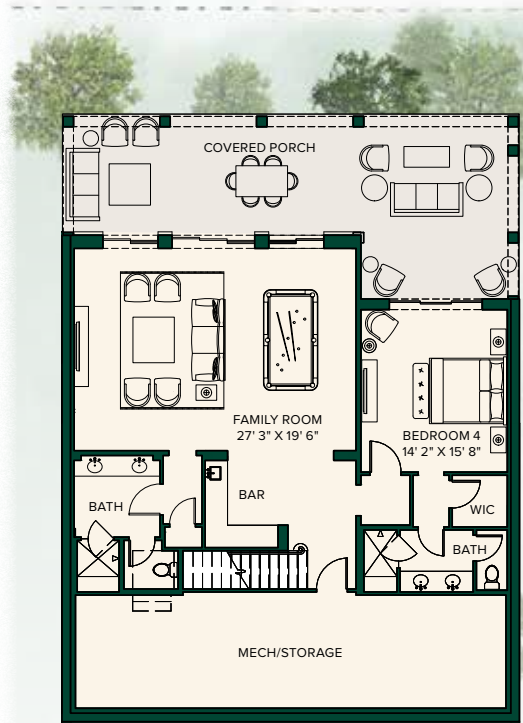
LIVING SPACE	
Interior	4,399 SF
Terrace/Covered Porch	2,252 SF

FLOOR PLAN

Taconic Contemporary
Options



LOWER LEVEL



ALTERNATE LOWER
LEVEL LAYOUT

LAYOUT	
Bedrooms	2
Bathrooms	2
Half Bathrooms	

LIVING SPACE	
Optional Lower Level	1,316 SF



T 845.789.1770
E sales@siloridge.com

SILO RIDGE FIELD CLUB

5021 Route 44, Amenia, NY 12501

These materials and the features and amenities described and depicted herein are based upon current development plans, which are subject to change without notice. Obtain the property report required by applicable government authorities before signing anything. No governmental agency has judged the merits or value, if any, of this property. This material shall not constitute an offer to sell in any state where prior registration is required.

SILO RIDGE FIELD CLUB