

Stissing Condos

Located in the heart of Silo Ridge, the Stissing Condos are equidistant to both The Barn and Ridge House. Located just minutes from world-class amenities, they offer the neighborhood flavor of a small Hudson Valley town. Elevators from the underground parking and storage area conveniently whisk you to your individual unit. The Stissing Condos boast Southern facing views of the #10 golf hole, lake, and mountains beyond.



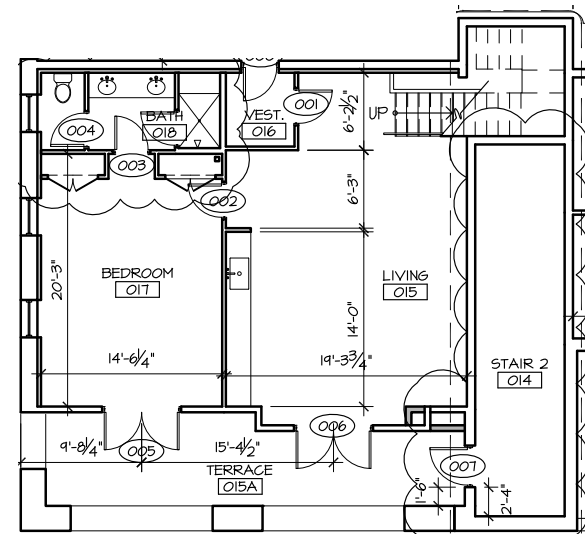


SITE MAP

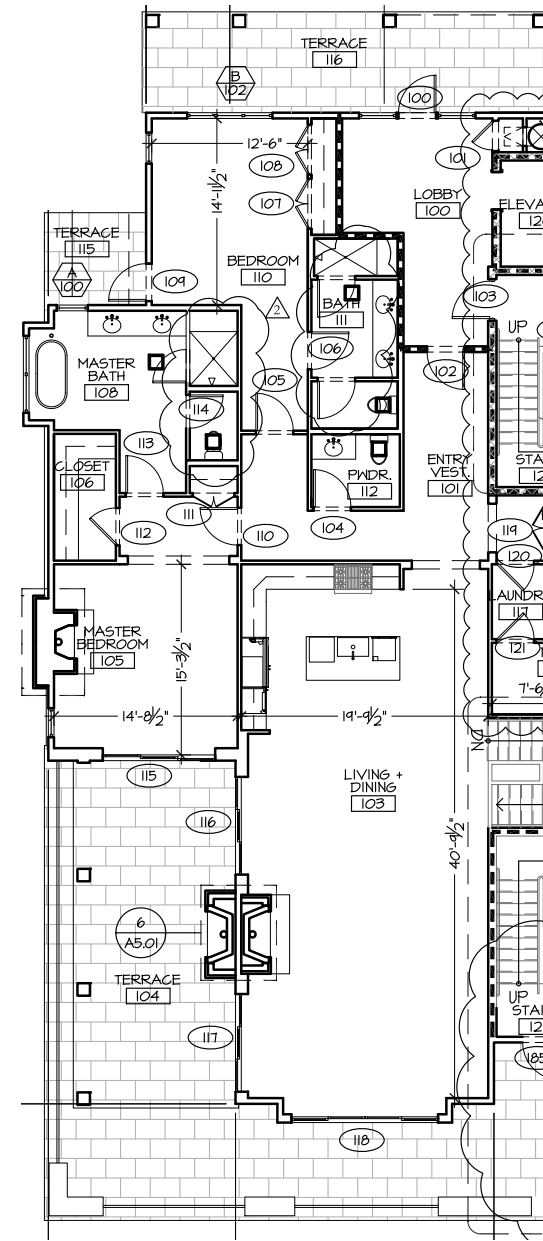


FLOOR PLAN

Unit 1, Three Bedroom



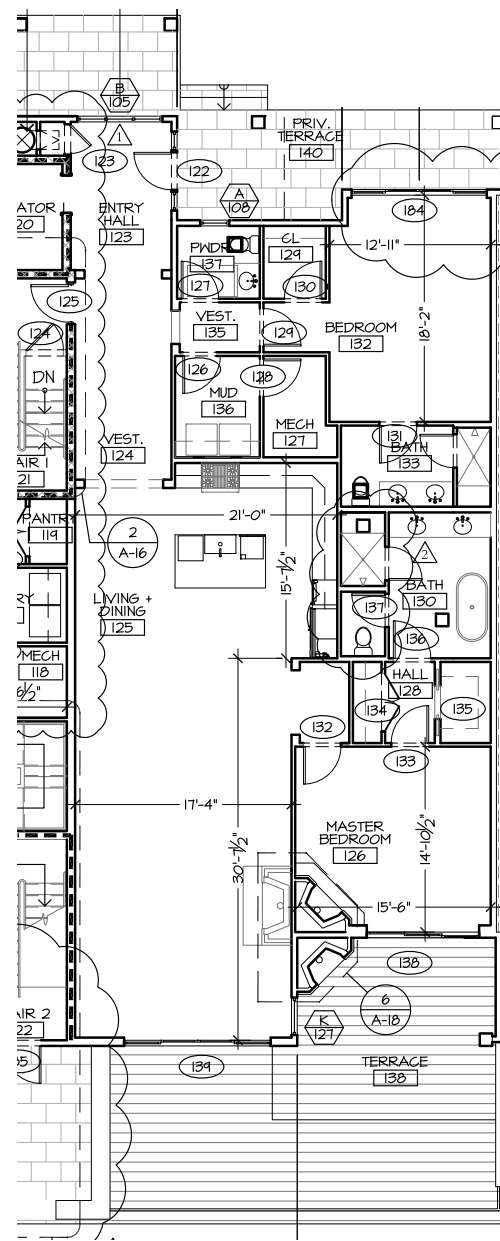
LOWER LEVEL



UPPER LEVEL

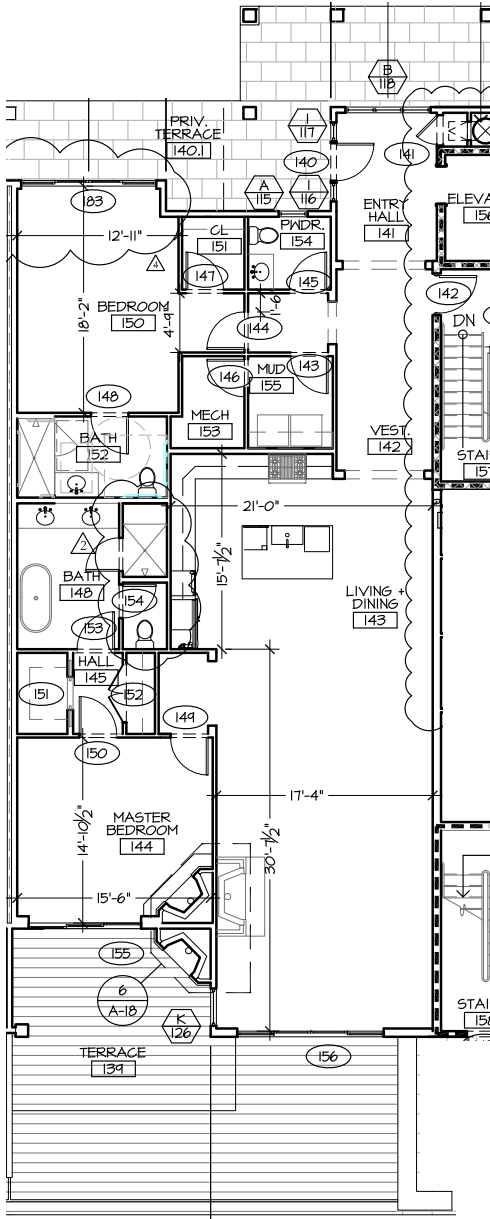
FLOOR PLAN

Unit 2, Two Bedroom



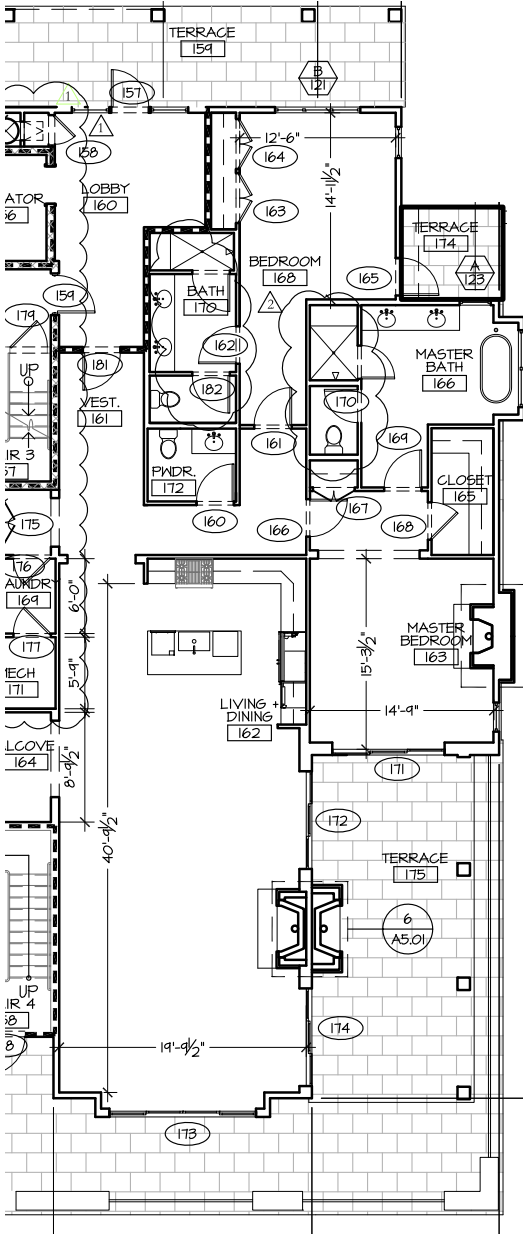
FLOOR PLAN

Unit 3, Two Bedroom



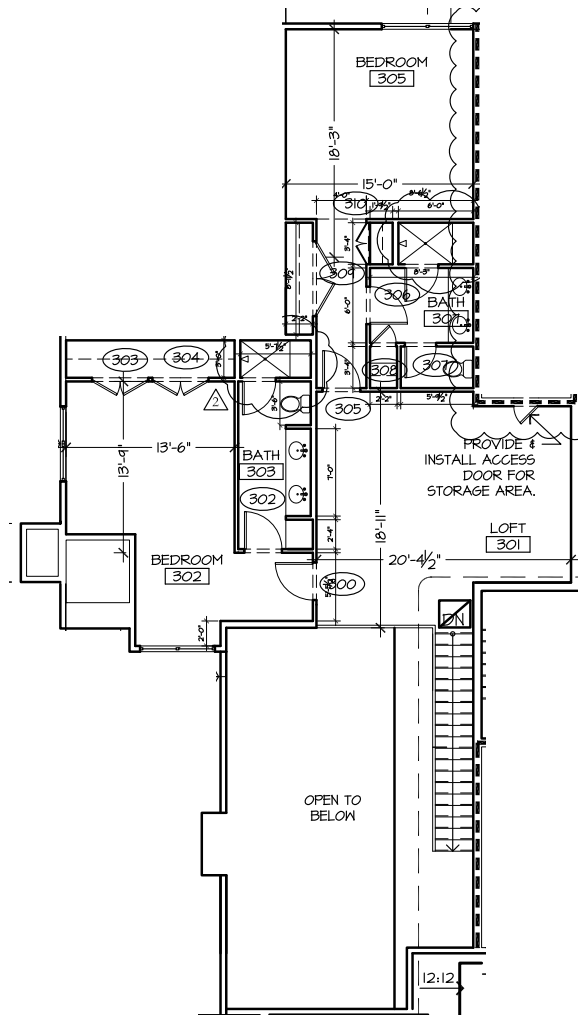
FLOOR PLAN

Unit 4, Two Bedroom

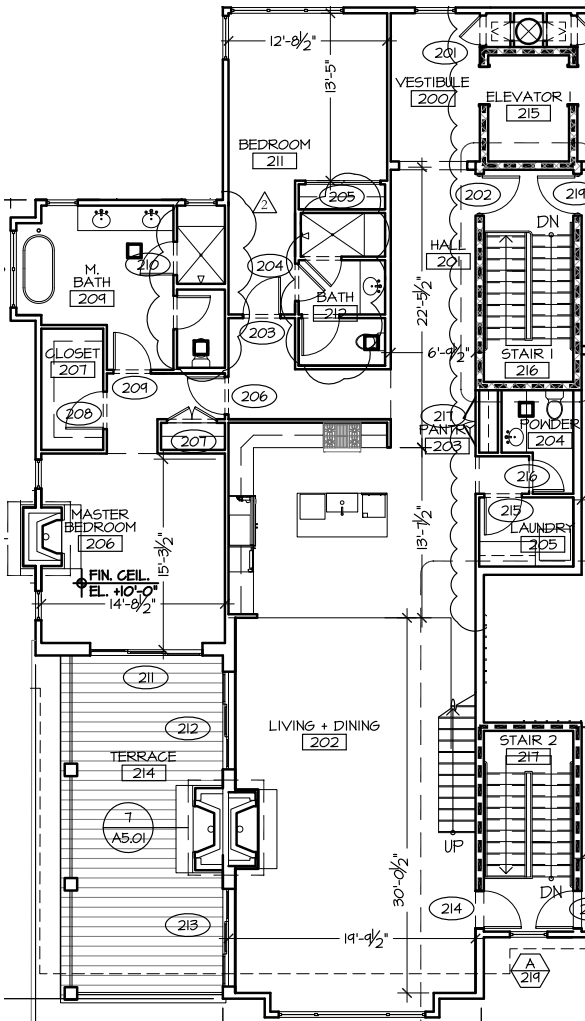


FLOOR PLAN

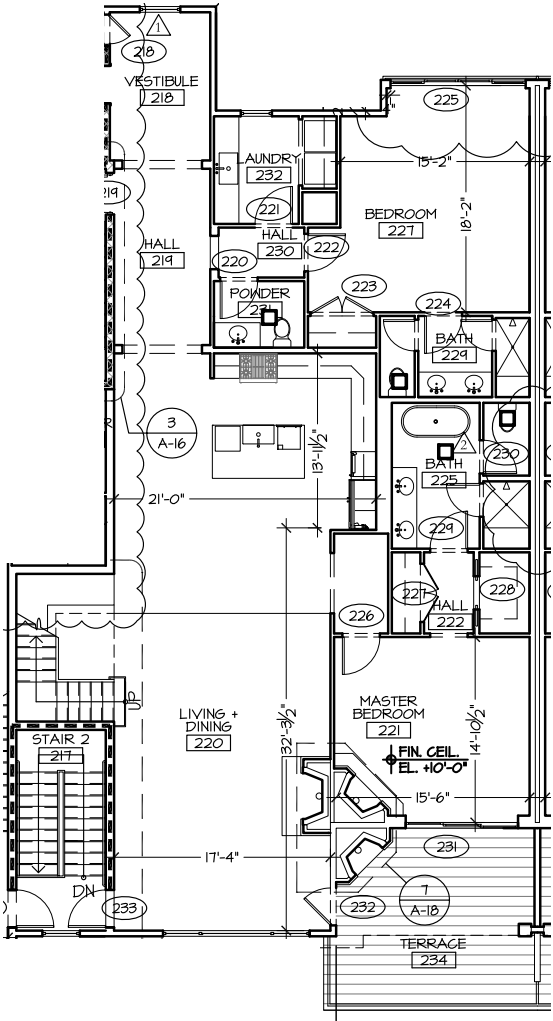
Unit 5, Three Bedroom



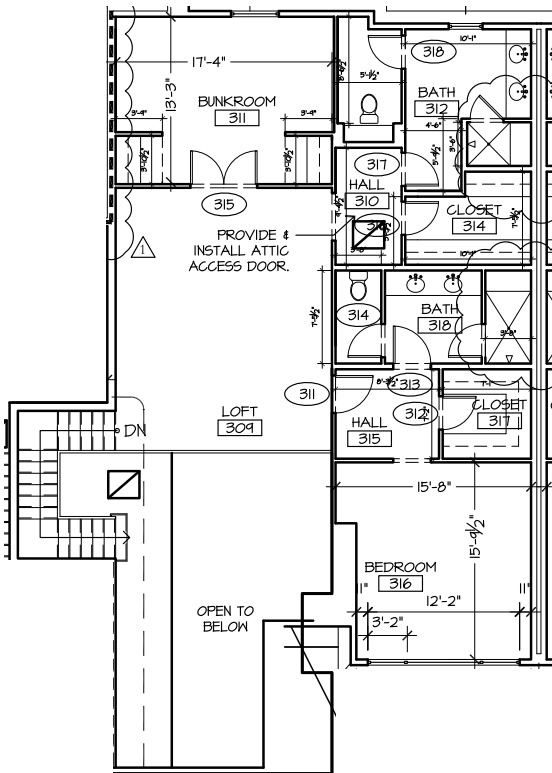
UPPER LEVEL



LOWER LEVEL



LOWER LEVEL



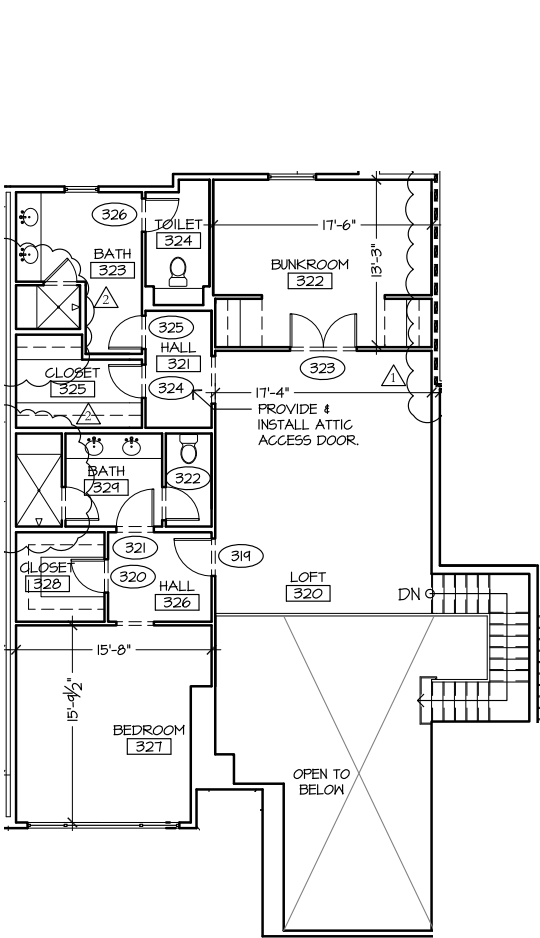
UPPER LEVEL

FLOOR PLAN

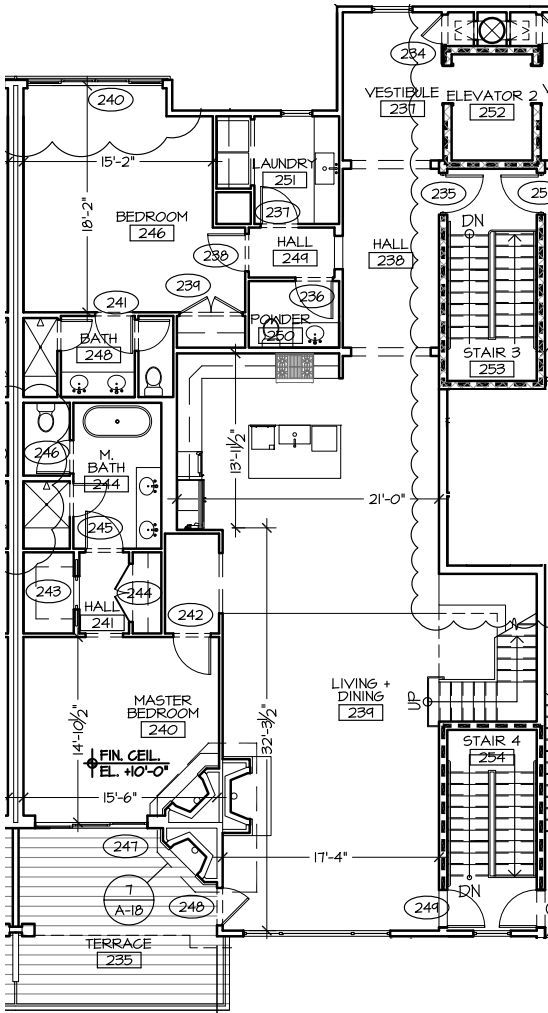
Unit 6, Four Bedroom

FLOOR PLAN

Unit 7, Four Bedroom



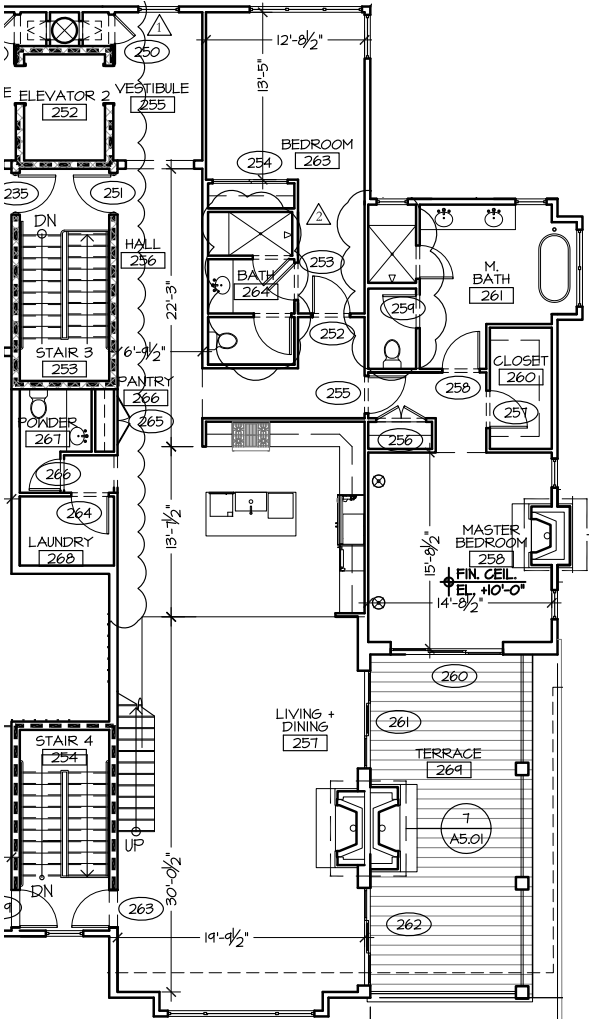
UPPER LEVEL



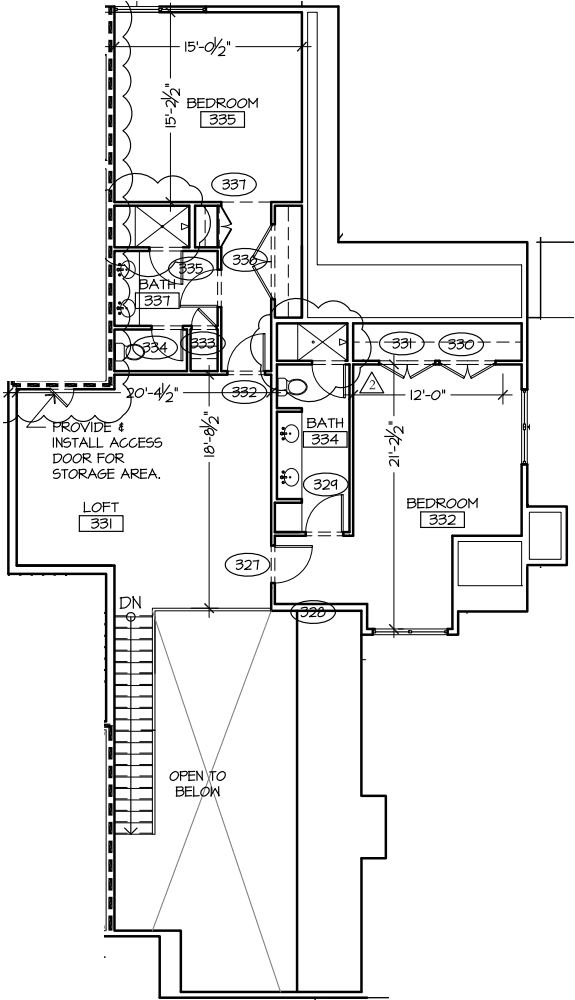
LOWER LEVEL

FLOOR PLAN

Unit 8, Three Bedroom



LOWER LEVEL



UPPER LEVEL







Hudson Valley Lifestyle

The relaxed rural vibe of New York's historic Hudson Valley awaits you at Silo Ridge Field Club, a private, gated community on 850 scenic acres in Amenia, NY. Just two hours by automobile or train from Manhattan, this exclusive property offers members a world-class equestrian center, Tom Fazio-designed golf course, extensive and varied outdoor recreation, and the five-star amenities and unparalleled service that Discovery Land Company offers. Here in the heart of Dutchess County, you're surrounded by farmers' markets, apple orchards, and growers who produce fresh, local, and seasonal ingredients for the club's dining venues. Choose from a range of residences designed to reflect the area's unique aesthetic or select a custom lot for the estate you've always dreamed of. Limited to just 245 residences, Silo Ridge is a close-knit, environmentally conscious community that promotes an elevated family-forward lifestyle.





Silo At a Glance

THE COMMUNITY

Silo Ridge offers many residential opportunities within its five distinct neighborhoods:

- Condominiums on The Green
- 77 Club Meadow, Lakeside, and Village Green single-family, developer-built residences
- 56 Estate Homesites from 0.5 acres to 2.0 acres

THE PRIVATE CLUB

- Private equity vertical membership club structure
- 18-hole Tom Fazio-designed private golf course, with practice facility, putting course, two signature comfort stations, and a golf house with dining, event lawn, and member boutique
- World-class equestrian center featuring 24 stalls, riding ring, pony barn and indoor arena

- State-of-the-art fitness center
- Tennis and pickleball courts and a ball park
- Organic garden and greenhouse complex with an orchard, chickens, goats, and beehives
- Expansive 11,000-square-foot Family Barn that includes kids' activity center, vintage arcade, bowling alley, and movie theater
- Pool complex including a water slide, splash pool, and kiddie pool
- Bait shop with fishing dock, cliff jump, and standup paddleboards, kayaks, and canoes

OUTDOOR PURSUITS

The Outdoor Pursuits team provides local knowledge and professional safety.

Activities include:

- Sporting clay and skeet shoots and archery
- Hiking and mountain biking trails
- Horseback riding lessons and trail rides

- Outdoor adventure camps
- Access to car racing at Lime Rock Race Track
- Stand-up paddleboarding, kayaking, and canoeing
- Fly fishing
- Ice skating, cross-country skiing, and snowshoeing

SIGNATURE SERVICE

Members enjoy the signature services that Discovery Land Company offers, including Member Services, Residential Services, 24/7 security, and a private website dedicated to Silo Ridge members.



SILO RIDGE FIELD CLUB
5021 Route 44, Amenia, NY 12501

For additional information about this property please contact sales@siloridge.com or 845.789.1770

Sponsor: Silo Ridge Ventures Property A LLC, 5021 Route 44, Amenia, New York 12501. **Developments:** Silo Ridge Condominium I and Silo Ridge Homeowners Association, Inc., 4651 Route 22, Amenia, New York 12501

The materials, features, and amenities described and depicted herein are based upon current development plans, which are subject to change without notice. This development plan is not a legal or sales document and is intended to show only general relationships. It may be revised from time to time. Refer to plots, legal descriptions and CC&Rs for actual lot sizes and restrictions. No guarantee is made that the features and amenities depicted by artist's renderings or otherwise described will be built or, if built, will be the same size or nature as depicted or described. Obtain the property report or its equivalent required by federal or state law and read it before signing anything. No federal or state agency judged the merits or value, if any, of this property. This advertisement is not an offering. No offering of the advertised units can be made and no deposits can be accepted, or reservations, binding or non-binding, can be made until an offering plan is filed with the New York State Department of Law. File No. CP14-0100; File No. CP14-0103