

## Estate Homesite 50

Nestled into the Taconic mountainside, the custom residence at Estate 50 features over 6,000 square feet of living space with expansive views of the lakeside, golf course and Berkshire Mountains beyond.

A meandering, uphill driveway blends seamlessly into the home's motor court to reveal a paved terrace enclosed by elevated garden beds overflowing with native plants. Through the recessed entry, breathtaking panoramic views of the valley below provide the perfect backdrop for the main level's open kitchen, dining and family rooms. The dining room faces a glass enclosed wine room; an oenophile's dream tasting space and wine display. The spacious, main level master suite features sweeping views, high sloped ceilings with exposed timber beams, and a spa bathroom.

Monumental stairs off the foyer lead to the upper level guest retreat and the lower level family sanctuary. The lower level boasts 3 bedrooms, 2.5 bathrooms, a generous laundry room, game room, billiards lounge and bar that open to the grade level patio and pool. A guest suite and a junior master suite overlooking the community to the east and south comprise the upper level retreat.

From its perch, this Hudson contemporary home is a true getaway and provides endless opportunities to enjoy the site's natural attributes with friends and family.

**Lot Size:** 0.83 Acres

**View:** Countryside

**Architect:** WC Ralston Architects PLLC

**Price:** \$8.5M





Lot Area: 31,858 sf  
 Improvement Area: 22,578 sf  
 Max Bldg Height: 35'



### Key Features

- 6,321 square feet of heated livable space
- 6 bedrooms
- 5 bathrooms + 2 powder rooms
- Two-car garage
- Private master suite on Main Level with spa bathroom and high sloped ceilings
- Open game room, billiards lounge and wet bar on Lower Level
- Heated pool changing room & bathroom at the pool terrace
- Exterior stairs from the motor court to the pool terrace below



- Improvement Area
- Transitional Area
- Sewer Easement
- HOA Landscape Area
- Golf Landscape/Forest

Grading related to Master Developer improvements is not shown on Homesite Diagrams. Homesite must be surveyed by owner to verify topography per section 2.4.1. Some lots may have slopes greater than 15%.

SITE MAP



ROUTE 22

ROUTE 42

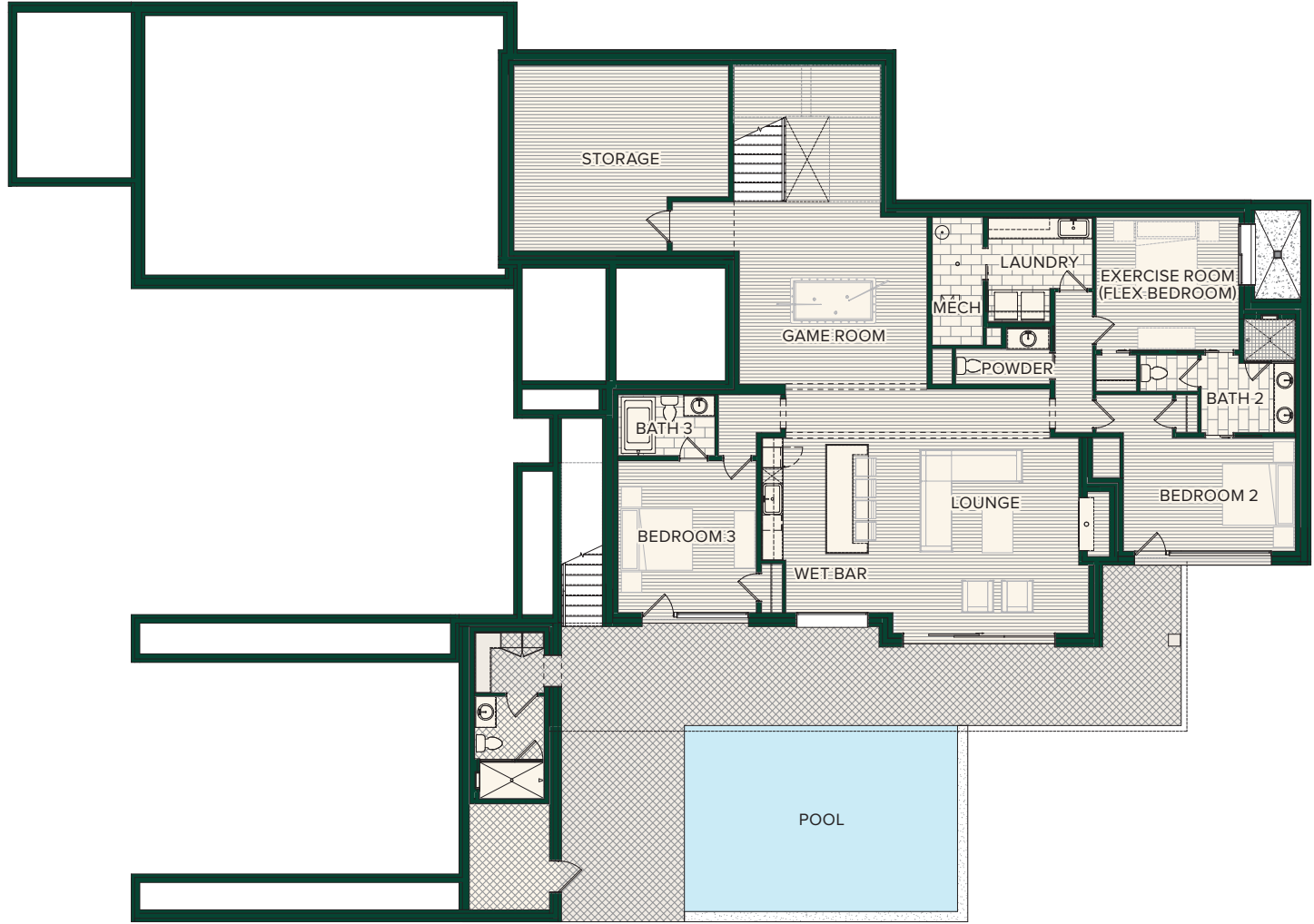


ESTATE HOMESITE 50





ESTATE HOMESITE 50 FLOOR PLAN



LOWER LEVEL

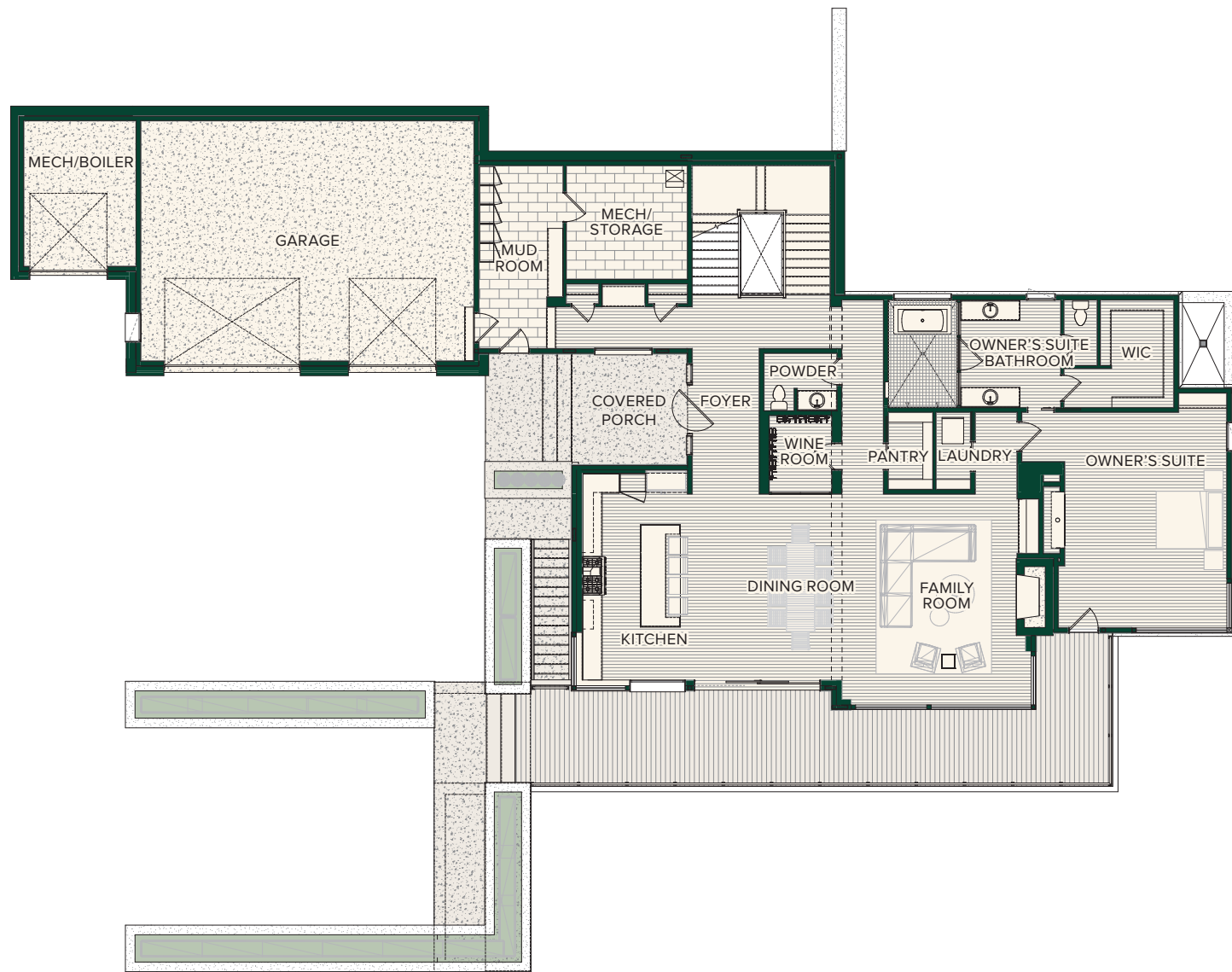
LAYOUT

Bedrooms	6
Bathrooms	5
Half Bathrooms	2

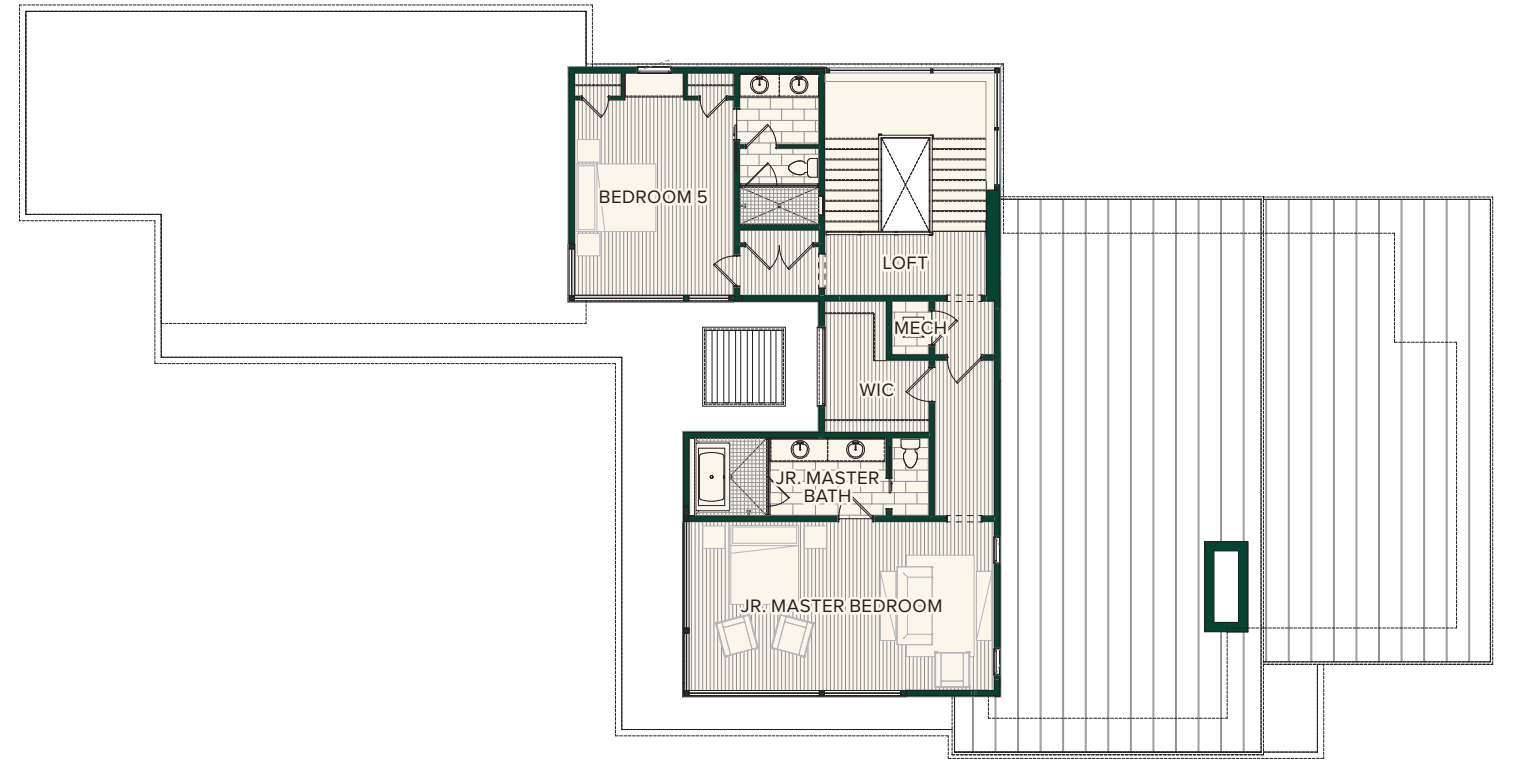
LIVING SPACE

Lower Level	2,405 SF
Main Level	2,601 SF
Upper Level	1,315 SF
<b>Total</b>	<b>6,321 SF</b>

ESTATE HOMESITE 50 FLOOR PLAN



MAIN LEVEL



UPPER LEVEL



## Hudson Valley Lifestyle

The relaxed rural vibe of New York's historic Hudson Valley awaits you at Silo Ridge Field Club, a private, gated community on 850 scenic acres in Amenia, NY. Just two hours by automobile or train from Manhattan, this exclusive property offers members a world-class equestrian center, Tom Fazio-designed golf course, extensive and varied outdoor recreation, and the five-star amenities and unparalleled service that Discovery Land Company offers. Here in the heart of Dutchess County, you're surrounded by farmers' markets, apple orchards, and growers who produce fresh, local, and seasonal ingredients for the club's dining venues. Choose from a range of residences designed to reflect the area's unique aesthetic or select a custom lot for the estate you've always dreamed of. Limited to just 245 residences, Silo Ridge is a close-knit, environmentally conscious community that promotes an elevated family-forward lifestyle.





## Silo At a Glance

### THE COMMUNITY

Silo Ridge offers many residential opportunities within its five distinct neighborhoods:

- Condominiums on The Green
- 77 Club Meadow, Lakeside, and Village Green single-family, developer-built residences
- 56 Estate Homesites from 0.5 acres to 2.0 acres

### THE PRIVATE CLUB

- Private equity vertical membership club structure
- 18-hole Tom Fazio-designed private golf course, with practice facility, putting course, two signature comfort stations, and a golf house with dining, event lawn, and member boutique
- World-class equestrian center featuring 24 stalls, riding ring, pony barn and indoor arena

- State-of-the-art fitness center
- Tennis and pickleball courts and a ball park
- Organic garden and greenhouse complex with an orchard, chickens, goats, and beehives
- Expansive 11,000-square-foot Family Barn that includes kids' activity center, vintage arcade, bowling alley, and movie theater
- Pool complex including a water slide, splash pool, and kiddie pool
- Bait shop with fishing dock, cliff jump, and standup paddleboards, kayaks, and canoes

### OUTDOOR PURSUITS

The Outdoor Pursuits team provides local knowledge and professional safety.

*Activities include:*

- Sporting clay and skeet shoots and archery
- Hiking and mountain biking trails
- Horseback riding lessons and trail rides

- Outdoor adventure camps
- Access to car racing at Lime Rock Race Track
- Stand-up paddleboarding, kayaking, and canoeing
- Fly fishing
- Ice skating, cross-country skiing, and snowshoeing

### SIGNATURE SERVICE

Members enjoy the signature services that Discovery Land Company offers, including Member Services, Residential Services, 24/7 security, and a private website dedicated to Silo Ridge members.



For additional information about this property please contact [sales@siloridge.com](mailto:sales@siloridge.com) or 845.789.1770



**SILO RIDGE FIELD CLUB**  
5021 Route 44, Amenia, NY 12501

| W C R A

**Sponsor:** Silo Ridge Ventures Property A LLC, 5021 Route 44, Amenia, New York 12501. **Developments:** Silo Ridge Condominium I and Silo Ridge Homeowners Association, Inc., 4651 Route 22, Amenia, New York 12501

The materials, features, and amenities described and depicted herein are based upon current development plans, which are subject to change without notice. This development plan is not a legal or sales document and is intended to show only general relationships. It may be revised from time to time. Refer to plots, legal descriptions and CC&Rs for actual lot sizes and restrictions. No guarantee is made that the features and amenities depicted by artist's renderings or otherwise described will be built or, if built, will be the same size or nature as depicted or described. Obtain the property report or its equivalent required by federal or state law and read it before signing anything. No federal or state agency judged the merits or value, if any, of this property. This advertisement is not an offering. No offering of the advertised units can be made and no deposits can be accepted, or reservations, binding or non-binding, can be made until an offering plan is filed with the New York State Department of Law. File No. CP14-0100; File No. CP14-0103