



Estate Homesite 50

Nestled into the Taconic mountainside, the custom residence at Estate 50 features over 6,000 square feet of living space with expansive views of the lakeside, golf course and Berkshire Mountains beyond.

A meandering, uphill driveway blends seamlessly into the home's motor court to reveal a paved terrace enclosed by elevated garden beds overflowing with native plants. Through the recessed entry, breathtaking panoramic views of the valley below provide the perfect backdrop for the main level's open kitchen, dining and family rooms. The dining room faces a glass enclosed wine room; an oenophile's dream tasting space and wine display. The spacious, main level master suite features sweeping views, high sloped ceilings with exposed timber beams, and a spa bathroom.

Monumental stairs off the foyer lead to the upper level guest retreat and the lower level family sanctuary. The lower level boasts 3 bedrooms, 2.5 bathrooms, a generous laundry room, game room, billiards lounge and bar that open to the grade level patio and pool. A guest suite and a junior master suite overlooking the community to the east and south comprise the upper level retreat.

From its perch, this Hudson contemporary home is a true getaway and provides endless opportunities to enjoy the site's natural attributes with friends and family.

Lot Size: 0.83 Acres

View: Countryside

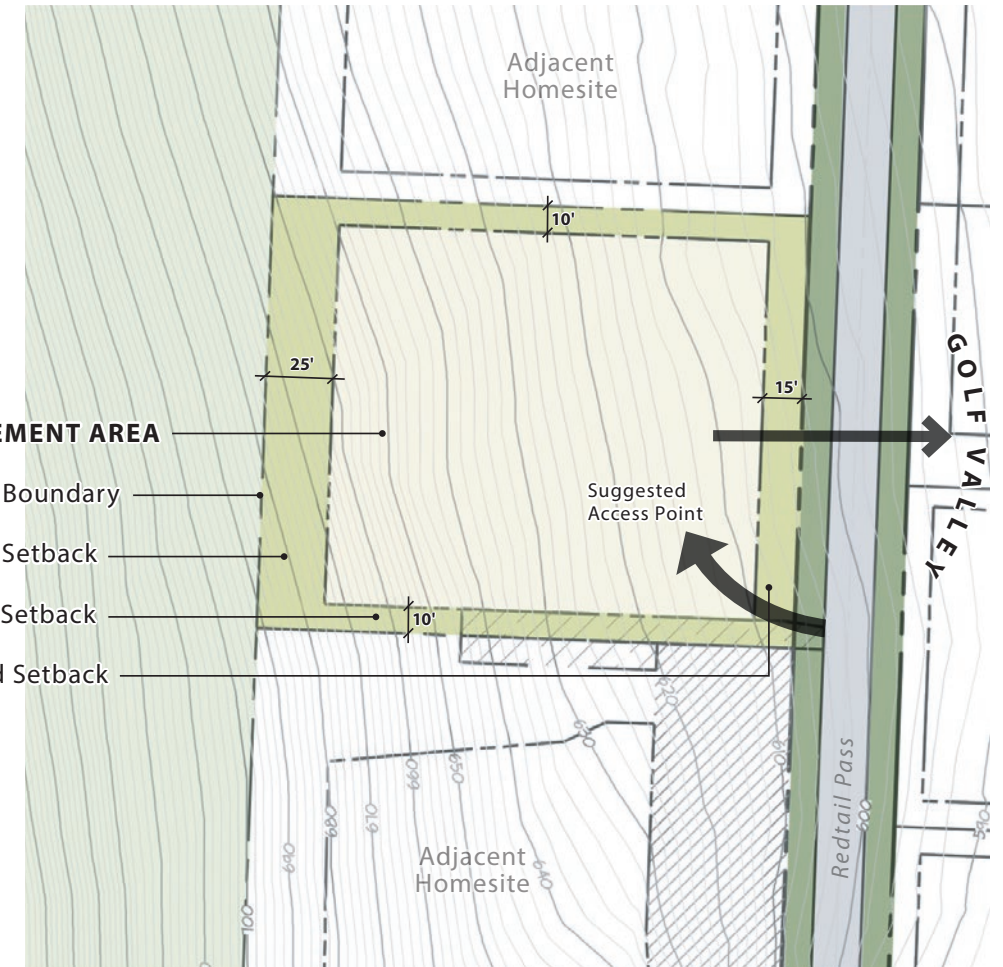
Architect: WC Ralston Architects PLLC

Price: \$15M



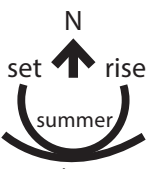
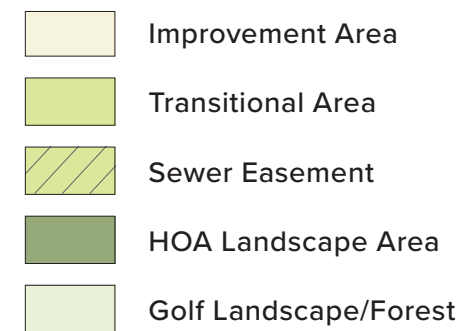


Lot Area: 31,858 sf
 Improvement Area: 22,578 sf
 Max Bldg Height: 35'



Key Features

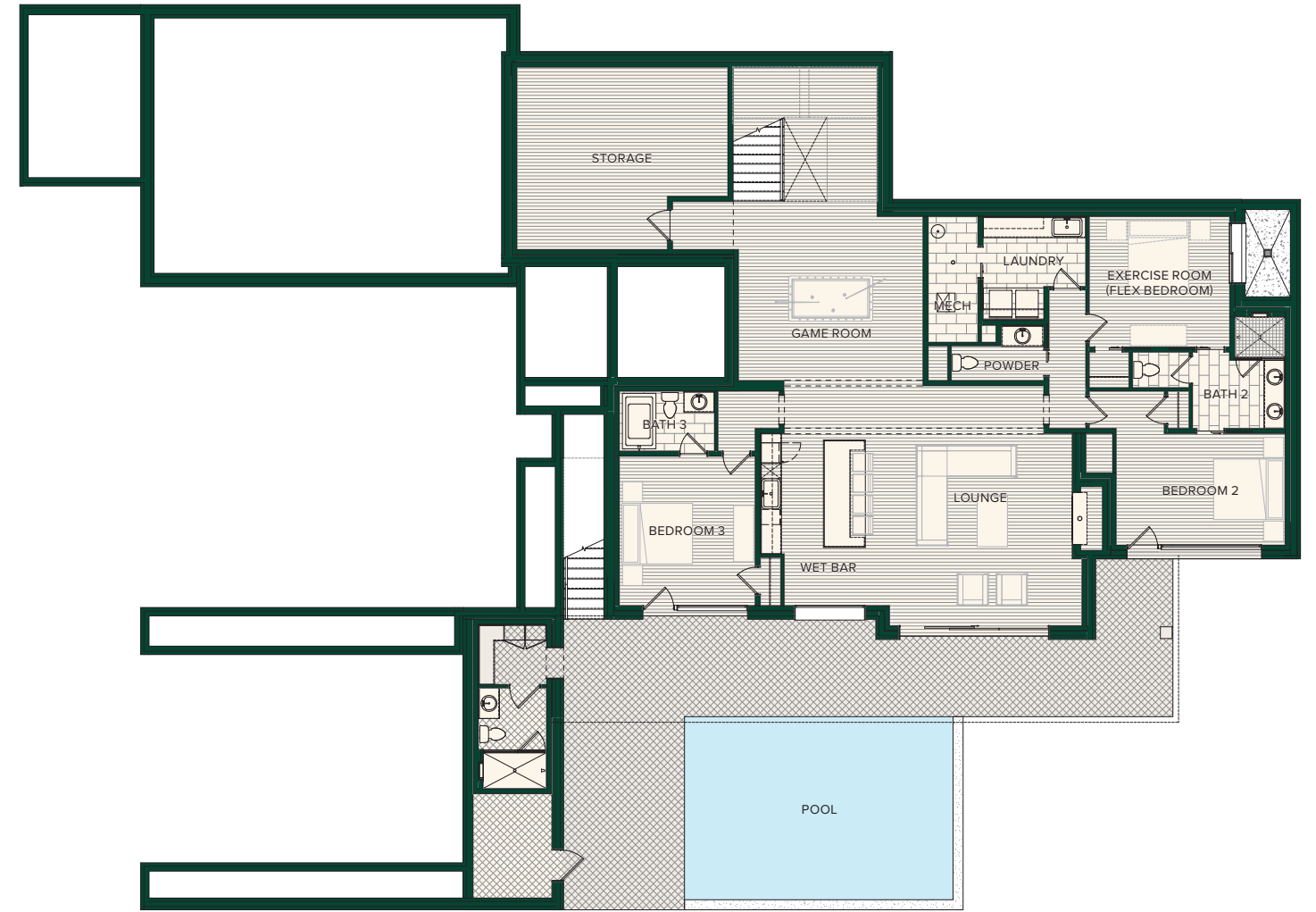
- 6,321 square feet of heated livable space
- 6 bedrooms
- 5 bathrooms + 2 powder rooms
- Two-car garage
- Private master suite on Main Level with spa bathroom and high sloped ceilings
- Open game room, billiards lounge and wet bar on Lower Level
- Heated pool changing room & bathroom at the pool terrace
- Exterior stairs from the motor court to the pool terrace below



Grading related to Master Developer improvements is not shown on Homesite Diagrams. Homesite must be surveyed by owner to verify topography per section 2.4.1. Some lots may have slopes greater than 15%.

ESTATE HOMESITE 50 FLOOR PLAN

ESTATE HOMESITE 50 FLOOR PLAN



LAYOUT

Bedrooms	6
Bathrooms	5
Half Bathrooms	2

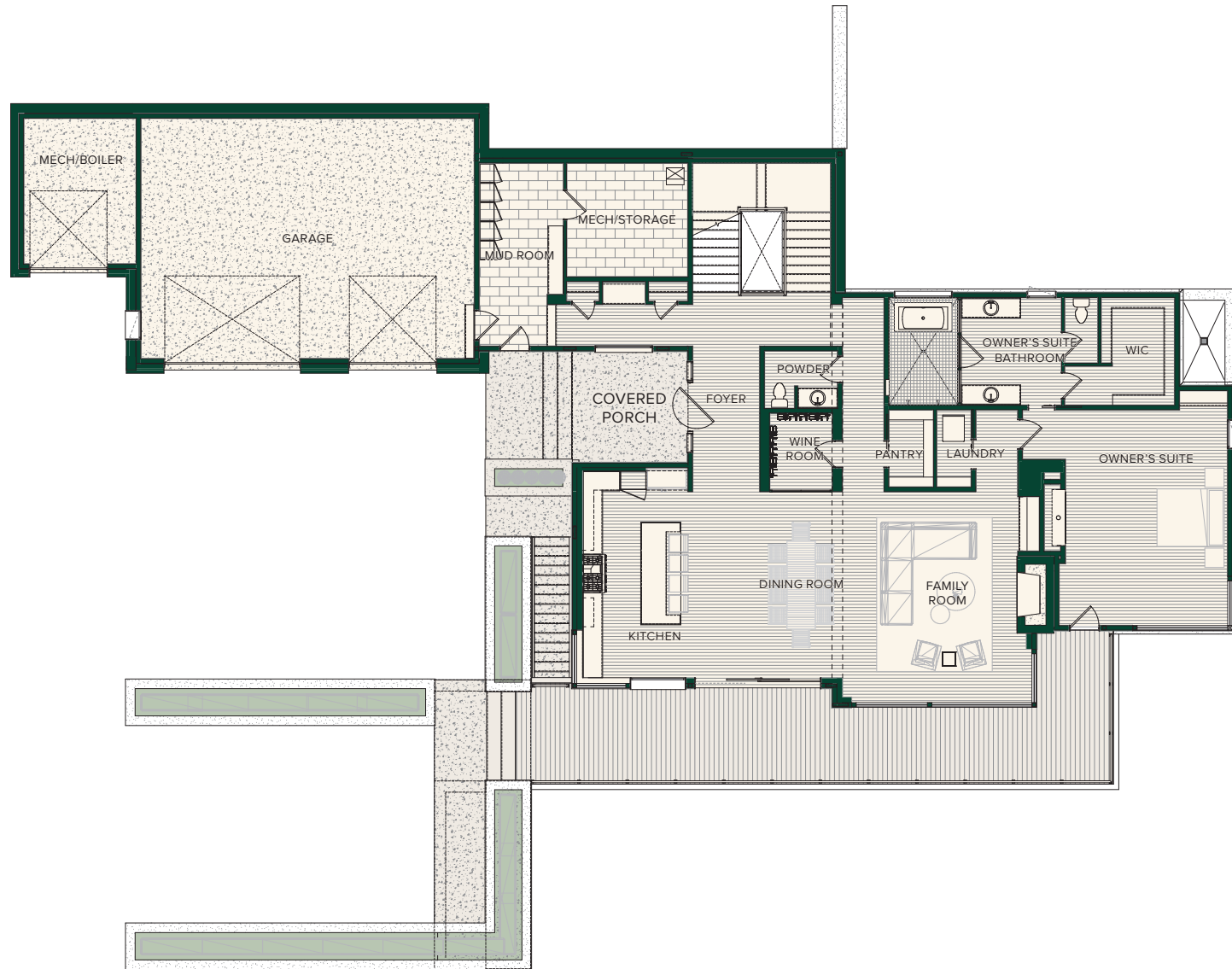
LIVING SPACE

Lower Level	2,405 SF
Main Level	2,601 SF
Upper Level	1,315 SF
Total	6,321 SF

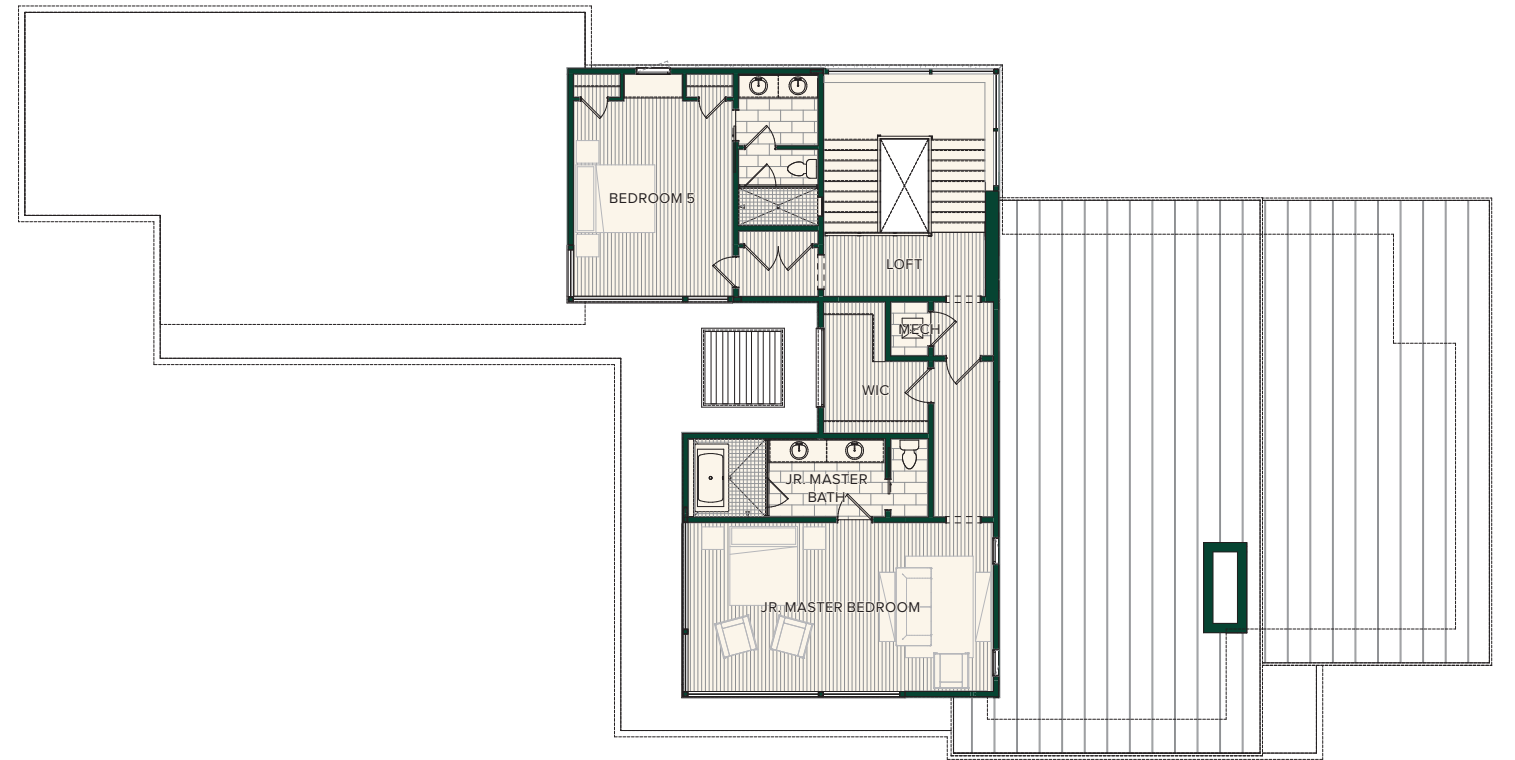
LOWER LEVEL

ESTATE HOMESITE 50 FLOOR PLAN

ESTATE HOMESITE 50 FLOOR PLAN



MAIN LEVEL



UPPER LEVEL



Hudson Valley Lifestyle

The relaxed rural vibe of New York's historic Hudson Valley awaits you at Silo Ridge Field Club, a private, gated community on 850 scenic acres in Amenia, NY. Just two hours by automobile or train from Manhattan, this exclusive property offers members a world-class equestrian center, Tom Fazio-designed golf course, extensive and varied outdoor recreation, and the five-star amenities and unparalleled service that Discovery Land Company offers. Here in the heart of Dutchess County, you're surrounded by farmers' markets, apple orchards, and growers who produce fresh, local, and seasonal ingredients for the club's dining venues. Choose from a range of residences designed to reflect the area's unique aesthetic or select a custom lot for the estate you've always dreamed of. Limited to just 245 residences, Silo Ridge is a close-knit, environmentally conscious community that promotes an elevated family-forward lifestyle.





Silo At a Glance

THE COMMUNITY

Silo Ridge offers a variety of residential opportunities, from spacious townhouses and condominiums to artfully crafted single-family homes tailored to fit the distinctive character and sense of place of Silo Ridge. With five distinctive neighborhoods, the Club offers a lifestyle to fit each Member's taste.

- **The Green: Condos and Townhomes:** The 97 luxury two-to four-bedroom condominiums and townhomes range from 1,800 to 3,700 square feet.
- **Developer Customizable Homes:** Spread amongst three (3) neighborhoods (Club Meadow, Lakeside, and Village Green Cottages), these 92 single-family, customizable residences range from 3,000 to 6,500 square feet with panoramic views.
- **Estate Homesites:** Nestled among a lush pine and deciduous hardwood forest abutting a 220-acre preserve, these 56 custom homesites range from half acre to two acres, creating the ideal setting to design your family retreat.
- **Member & Residential Services:** Provide round-the-clock concierge and property management/maintenance assistance, 24/7 professional security, and access to private Members-only website and app dedicated to Silo Ridge Members.

THE PRIVATE CLUB

- Membership at Silo Ridge offers Discovery's signature vertical legacy membership structure providing club access to multiple generations within the same immediate family
- Tom Fazio-designed private golf course with two signature comfort stations, state-of-the-art practice facility, fun, challenging putting course, golf simulator and a golf house with dining venues, event lawn and Member boutique
- Silo Ridge has a strong focus on living well and combines fitness and healthy living for an overall commitment to wellness and balance
- Close proximity to world-class boarding schools
- The Stables, a 700-acre world-class equestrian center, featuring 24 stalls, riding ring and pony ring. In partnership with Higher Ground Farm, Members of all ability levels can take lessons and enjoy scenic trail rides. Built as a state-of-the-art show jumping facility, Higher Ground Farm offers top training for show jumpers and hunters and those looking to become a top competitor nationwide.
- Farm-to-table dining and special events present one-of-a-kind opportunities for family to create memories and experiences
- The Ice Rink: Olympic size ice-skating and hockey rink with warming hut

- Sledding hill
- “Field of Dreams” wiffle ball field
- Hunting lodge featuring sporting clays and skeet shooting
- Racquet Club: Outdoor and indoor tennis, paddle tennis and pickleball courts
- Organic garden and greenhouse complex with an orchard, rabbits, chickens, goats, beehives and private Member gardens
- Bait shop with fishing dock, cliff jump and stand-up paddleboards, kayaks, canoes, rods and reels
- Expansive 11,000-square-foot family barn that includes a kids’ activity center, vintage arcade, bowling alley, movie theater, restaurant and bar
- Pool complex including a water slide, splash pool, kiddie pool, cabanas and chaise lounges

OUTDOOR PURSUITS

The Outdoor Pursuits team, Discovery’s proprietary adventure guide service and outfitter, provides local knowledge and professional safety while helping your family create memories and unforgettable experiences that will be cherished for years. Organized ground and personalized activities include:

- Sporting clay and skeet shoots
- Miles of hiking, mountain biking and ATV trails
- World-class equestrian facilities
- Outdoor adventure camps
- Access to car racing at Lime Rock Park
- Stand-up paddleboarding, kayaking and canoeing
- Fly-fishing
- Archery and paintball
- Ice skating, ice hockey, cross-country skiing and snowshoeing
- Arts and crafts

TRAVEL LOGISTICS

The Silo Ridge Field Club team will arrange all aspects of travel for Members and their guests to create a seamless, door-to-door travel experience. Private transportation by car or helicopter is available upon request. For arrival by train, a member of the travel team greets visitors at the Wassaic Train Station in a Silo Ridge luxury vehicle and delivers them to their personal residence. Member Services’ private transportation is available upon request via car service or helicopter.





Estate Homesite 50

For additional information
about this property please
contact sales@siloridge.com or
845.789.1770



SILO RIDGE FIELD CLUB
4651 NY-22, Amenia, NY 12501

W C R A

Sponsor: Silo Ridge Ventures Property A LLC, 5021 Route 44, Amenia, New York 12501.

Developments: Silo Ridge Condominium I and Silo Ridge Homeowners Association, Inc., 4651 Route 22, Amenia, New York 12501

The materials, features, and amenities described and depicted herein are based upon current development plans, which are subject to change without notice. This development plan is not a legal or sales document and is intended to show only general relationships. It may be revised from time to time. Refer to plots, legal descriptions and CC&Rs for actual lot sizes and restrictions. No guarantee is made that the features and amenities depicted by artist's renderings or otherwise described will be built or, if built, will be the same size or nature as depicted or described. Obtain the property report or its equivalent required by federal or state law and read it before signing anything. No federal or state agency judged the merits or value, if any, of this property. This advertisement is not an offering. No offering of the advertised units can be made and no deposits can be accepted, or reservations, binding or non-binding, can be made until an offering plan is filed with the New York State Department of Law. File No. CP14-0100; File No. CP14-0103