



SHEFFIELD BUILDING

Condominium Association 3







Unit 1 — View from Living / Dining
Materials & landscaping are for design intent and may vary

SHEFFIELD BUILDING

- Five Units within the Sheffield Buidling
- Condo Association 3 consists of four total buildings
- Units range from 2 to 4 bedrooms with 2,205 to 4,358 total sq ft
- Sweeping views of the golf course, the Hudson Valley and Silo Ridge Equestrian Center
- Set in the heart of Silo Ridge, the Sheffield Building is just steps from world-class amenities, including the Family Barn and Ridge House, offering the neighborhood feel of a small Hudson Valley town.

View from Unit 5 Outdoor Living Area
Materials & landscaping are for design intent and may vary



Unit 2 — Primary Bedroom
Materials & landscaping are for design intent and may vary



Unit 4 — Living / Dining
Materials & landscaping are for design intent and may vary

SILO RIDGE FIELD CLUB

1 ORGANIC GARDEN
2 THE BACKYARD
3 FIELD HOUSE
4 SOUTH ENTRY
5 SPORTS FIELDS
6 DOG PARK
7 LAND PRESERVE
8 ESTATE HOMESITES
9 BACK PORCH
10 HIKING TRAILS
11 CLIFF JUMP
12 BAIT SHOP
13 LAKESIDE HOMES
14 OBLONG LAKE
15 FAMILY BARN & POOL
16 SHIN RIN SPA
17 CLUB MEADOW HOMES
18 WELCOME HOUSE
19 MAIN ENTRANCE
20 VILLAGE GREEN
21 PENNY CANDY
22 PRACTICE AREA
23 RIDGE HOUSE
24 VILLAGE GREEN COTTAGES
25 SCENIC OVERLOOK
26 FRONT PORCH



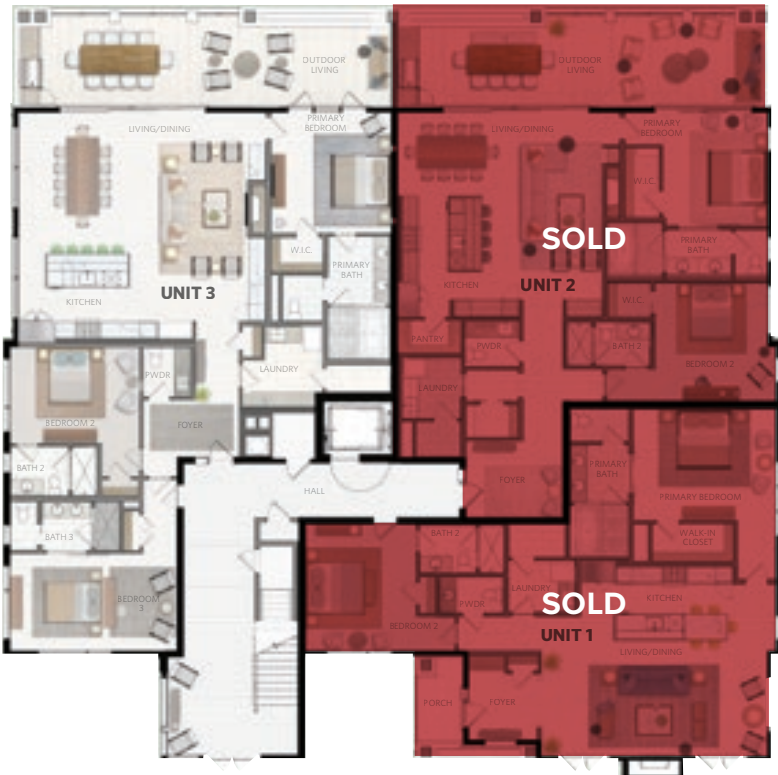
SHEFFIELD BUILDING

The Sheffield building is located in the heart of Silo Ridge, situated just steps away from several amenities including the Ridge House, Family Barn and future spa. The building features five units that range from 2 to 4 bedrooms with 2,205 to 4,358 total sq ft. The generous rooms offer sweeping views of the lush Hudson Valley and beyond, providing an authentic connection to the surrounding natural environment all year long. Come home and relax by the fire after a day of hiking, biking, golfing or just hanging with friends. Small town charm meets sophisticated living at Silo Ridge.

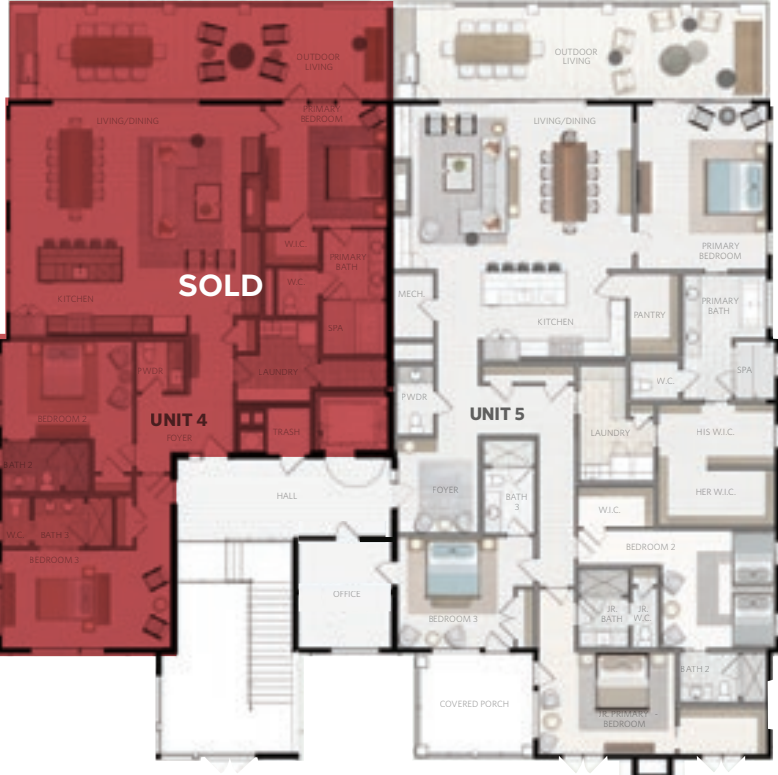
SHEFFIELD BUILDING 3.2

	Beds	Bath	Floor	Indoor Sq Ft	Outdoor Sq Ft	Total Sq Ft
Unit 1	2	2.5	1st	SOLD 1,769	436	2,205
Unit 2	2	2.5	1st	SOLD 1,877	582	2,459
Unit 3	3	3.5	1st	2,348	542	2,890
Unit 4	3	3.5	2nd	SOLD 2,348	542	2,890
Unit 5	4	4.5	2nd	3,590	768	4,358

FIRST FLOOR



SECOND FLOOR



UNIT 1

Bedrooms

2

Baths

2.5

First Floor

Sq. Ft.

Indoor: 1,769

Outdoor: 436

Total: 2,205

Design Scheme

3

UNIT LOCATION KEY



0 2 4 8
SCALE 1/8" = 1'-0"

**Subject to change*

UNIT 2

Bedrooms

2

Baths

2.5

First Floor

Sq. Ft.

Indoor: 1,877

Outdoor: 582

Total: 2,459

Design Scheme

1

UNIT LOCATION KEY



0 2 4 8
SCALE 1/8" = 1'-0"

**Subject to change*

UNIT 3

Bedrooms

3

Baths

3.5

First Floor

Sq. Ft.

Indoor: 2,348

Outdoor: 542

Total: 2,890

Design Scheme

3

UNIT LOCATION KEY



**Subject to change*



UNIT 4

Bedrooms

3

Baths

3.5

Second Floor

Sq. Ft.

Indoor: 2,348

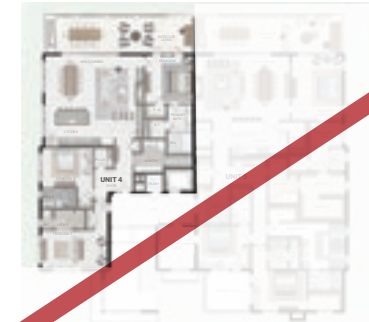
Outdoor: 542

Total: 2,890

Design Scheme

1

UNIT LOCATION KEY



**Subject to change*

SOLD



UNIT 5

Bedrooms

4

Baths

4.5

Second Floor

Sq. Ft.

Indoor: 3,590

Outdoor: 768

Total: 4,358

Design Scheme

2

UNIT LOCATION KEY



**Subject to change*



Unit 5 — Dedicated Kitchen Area
Materials & landscaping are for design intent and may vary



Unit 2 — Living Room
Materials & landscaping are for design intent and may vary



Unit 3 — Primary Bedroom
Materials & landscaping are for design intent and may vary



Unit 3 — Primary Bath*



Unit 3 — Bedroom 3



Unit 4 — Dedicated Kitchen Area
Materials & landscaping are for design intent and may vary



Unit 5 —Living / Dining
Materials & landscaping are for design intent and may vary



The Silo Ridge Experience: Community Information

THE COMMUNITY

Silo Ridge offers a variety of residential opportunities, from spacious townhouses and condominiums to artfully crafted single-family homes tailored to fit the distinctive character and sense of place of Silo Ridge. With five distinctive neighborhoods, the Club offers a lifestyle to fit each Member’s taste.

- **Village Green:** The 102 luxury two- to fourbedroom condominiums range from 1,800 to 3,700 square feet.
- **Developer Customizable Homes:** Spread amongst three (3) neighborhoods (Club Meadow, Lakeside, and Village Green Cottages), these 72 single-family, customizable residences range from 3,000 to 6,500 square feet with panoramic views.
- **Estate Homesites:** Nestled among a lush pine and deciduous hardwood forest abutting a 220-acre preserve, these 55 custom homesites range from half acre to two acres, creating the ideal setting to design your family retreat.
- **Member & Residential Services:** Provide round-the-clock concierge and property management/ maintenance assistance, 24/7 professional security, and access to private Members-only website and app dedicated to Silo Ridge Members.

THE PRIVATE CLUB

- Membership at Silo Ridge offers Discovery’s signature vertical legacy membership structure providing club access to multiple generations within the same immediate family
- Tom Fazio-designed private golf course with two signature comfort stations, state-of-the-art practice facility, fun, challenging putting course, golf simulator and a golf house with dining venues, event lawn and Member boutique
- Olympic size ice-skating and hockey rink
- Sledding hill
- “Field of Dreams” wiffle ball field
- Hunting Cabin featuring archery, paintball, sporting clays, skeet shooting and Upland hunting
- Racquet Club: Outdoor and indoor tennis, Padel, paddle tennis and pickleball courts
- Organic garden and greenhouse complex with an orchard, rabbits, chickens, goats, beehives and private Member gardens
- Silo Ridge has a strong focus on living well and combines fitness and healthy living for an overall commitment to wellness and balance
- Expansive 11,000-square-foot Family Barn that includes a kids’ activity center, vintage arcade, bowling alley, movie theater, restaurant and bar
- Pool complex including a water slide, splash pool, kiddie pool, cabanas and chaise lounges
- Bait shop with fishing dock, cliff jump and stand-up paddleboards, kayaks, canoes, rods and reels
- Close proximity to world-class boarding schools
- The Stables, a 700-acre world-class equestrian center, featuring 24 stalls, riding ring and pony ring. In partnership with Higher Ground Farm, Members of all ability levels can take lessons and enjoy scenic trail rides. Built as a state-of-the-art show jumping facility, Higher Ground Farm offers top training for show jumpers and hunters and those looking to become a top competitor nationwide.
- Farm-to-table dining and special events present oneof- a-kind opportunities for family to create memories and experiences



Aerial view of Silo Ridge

For more information about this property
and its pricing please contact Silo Ridge Realty.

SILO RIDGE FIELD CLUB

845.789.1770
sales@siloridge.com

4651 NY-22
Amenia, NY 12501

siloridge.com

Sponsor: Silo Ridge Ventures Property A LLC, 4651 NY-22, Amenia, NY 12501

Developments: Silo Ridge Condominium I and Silo Ridge Homeowners Association, Inc., 4651 NY-22, Amenia, NY 12501

The materials, features, and amenities described and depicted herein are based upon current development plans, which are subject to change without notice. This development plan is not a legal or sales document and is intended to show only general relationships. It may be revised from time to time. Refer to plots, legal descriptions and CC&Rs for actual lot sizes and restrictions. No guarantee is made that the features and amenities depicted by artist's renderings or otherwise described will be built or, if built, will be the same size or nature as depicted or described. Obtain the property report or its equivalent required by federal or state law and read it before signing anything. No federal or state agency judged the merits or value, if any, of this property. This advertisement is not an offering. No offering of the advertised units can be made and no deposits can be accepted, or reservations, binding or non-binding, can be made until an offering plan is filed with the New York StateDepartment of Law. File No. CP14-0100; File No. CP14-0103