



EAVE WALKOUT



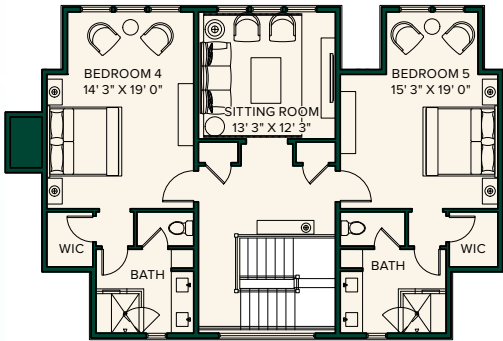
The multilevel Eave residence is named for its stylish overhanging roof, which shelters an open-air, covered side porch. The tall glass corner windows on three sides of the home offer natural light and views, while the expansive great room on the main level leads to the master suite. The mud room that connects the garage to the pantry provides plenty of space for gear and other storage. Upper and lower levels can be configured with three, four, or five additional bedrooms to perfectly suite your lifestyle and needs.

FLOOR PLAN

5 Bedroom
Walkout



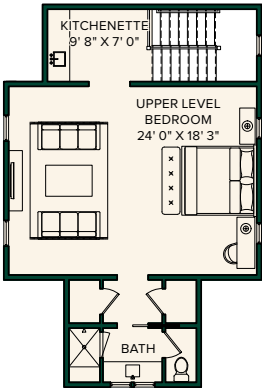
UPPER LEVEL



LOWER LEVEL



OPTIONAL
UPPER LEVEL
BEDROOM



| LAYOUT | MAIN | UPPER | LIVING SPACE | |
|----------------|------|-------|-----------------------|----------|
| Bedrooms | 1 | 2 | Interior | 5,138 SF |
| Bathrooms | 1 | 2 | Terrace/Covered Porch | 1,974 SF |
| Half Bathrooms | 1 | | | |

| LAYOUT | | LIVING SPACE | |
|----------------|---|------------------------------|--------|
| Bedrooms | 2 | Optional Upper Level Bedroom | 730 SF |
| Bathrooms | 2 | | |
| Half Bathrooms | 1 | | |

FLOOR PLAN

5 Bedroom
Walkout Option





T 845.789.1770
E sales@siloridge.com

SILO RIDGE FIELD CLUB

5021 Route 44, Amenia, NY 12501

These materials and the features and amenities described and depicted herein are based upon current development plans, which are subject to change without notice. Obtain the property report required by applicable government authorities before signing anything. No governmental agency has judged the merits or value, if any, of this property. This material shall not constitute an offer to sell in any state where prior registration is required.

SILO RIDGE FIELD CLUB