



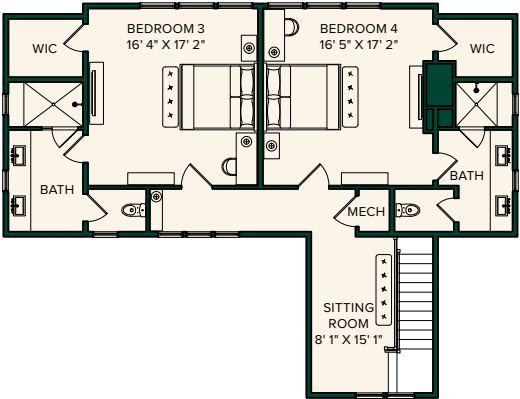
HUDSON CONTEMPORARY



The four-bedroom, four-bath Hudson combines privacy with a penchant for entertaining. The main floor features a central living area flanked on one side by a master suite and by a second bedroom on the other; these rooms open to a panoramic covered porch that extends the width of the residence. Matching bedrooms on the upper level each include a private balcony, while a sitting room offers additional space for relaxation.

FLOOR PLAN

Contemporary

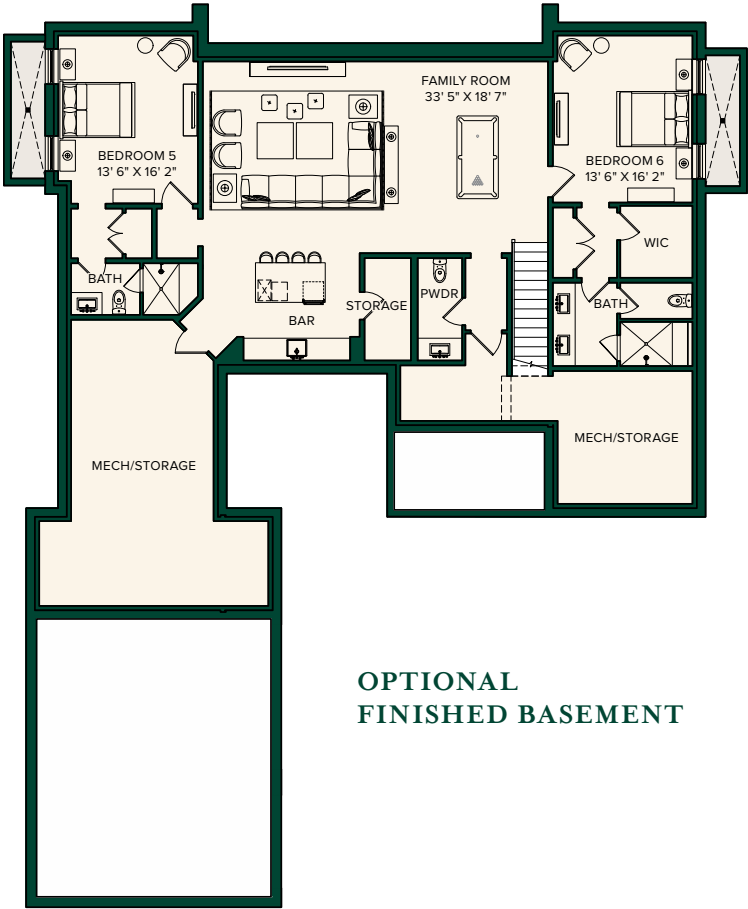


LAYOUT	MAIN	UPPER
Bedrooms	2	2
Bathrooms	2	2
Half Bathrooms	1	

LIVING SPACE	
Interior	3,623 SF
Terrace/Covered Porch	776 SF

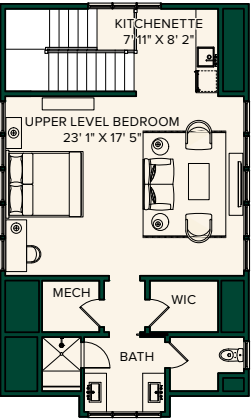
FLOOR PLAN

Contemporary Options



LAYOUT	BASEMENT	UPPER BEDROOM
Bedrooms	2	1
Bathrooms	2	1
Half Bathrooms	1	

LIVING SPACE	
Optional Finished Basement	1,711 SF
Optional Upper Level Bedroom	923 SF





SILO RIDGE FIELD CLUB

5021 Route 44, Amenia, NY 12501

T 845.789.1770
E sales@siloridge.com

These materials and the features and amenities described and depicted herein are based upon current development plans, which are subject to change without notice. Obtain the property report required by applicable government authorities before signing anything. No governmental agency has judged the merits or value, if any, of this property. This material shall not constitute an offer to sell in any state where prior registration is required.

SILO RIDGE FIELD CLUB