



MILLBROOK



Inspired by the classic barns of the Hudson Valley, the Millbrook is designed for the 21st century, with corner glass on three sides of the home. A double-height great room, exposed beams in the master bedroom, and tall windows throughout the home add to the light airy feeling, while a deck and covered porch invite outdoor entertainment. The floor plan can be customized to accommodate three, four, or five bedrooms and an interior ranging from 3,406 to 4,134 square feet.

FLOOR PLAN

Millbrook



LAYOUT

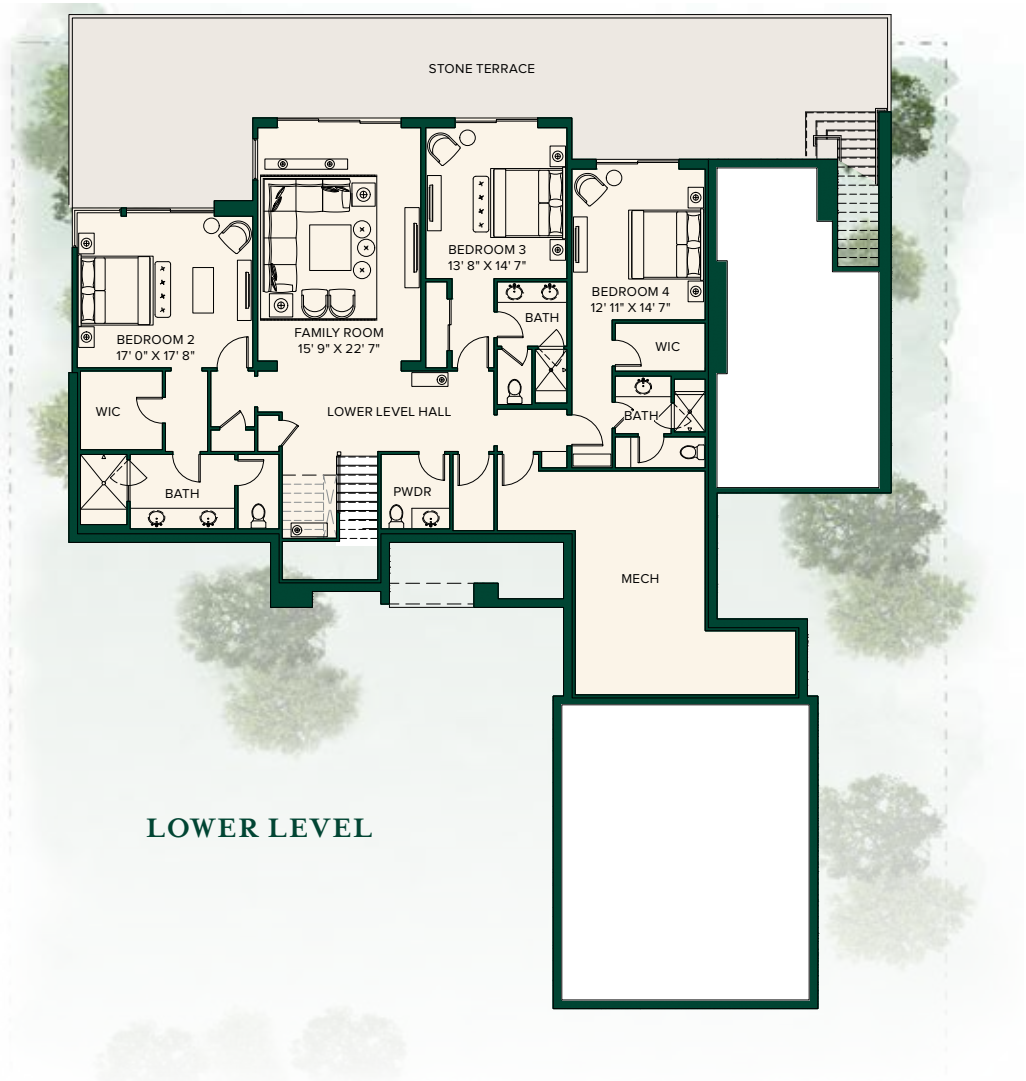
Bedrooms	1
Bathrooms	1
Half Bathrooms	1

LIVING SPACE

Interior	4,134 SF
Terrace/Covered Porch	2,065 SF

FLOOR PLAN

Millbrook

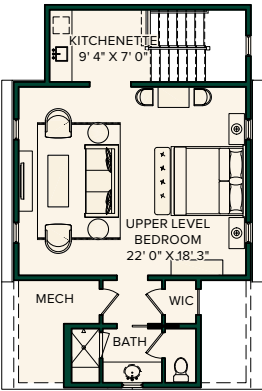


LAYOUT

Bedrooms	3
Bathrooms	3
Half Bathrooms	

LIVING SPACE

Optional Upper Level Bedroom	654 SF
------------------------------	--------



OPTIONAL
UPPER LEVEL
BEDROOM



T 845.789.1770
E sales@siloridge.com

SILO RIDGE FIELD CLUB

5021 Route 44, Amenia, NY 12501

These materials and the features and amenities described and depicted herein are based upon current development plans, which are subject to change without notice. Obtain the property report required by applicable government authorities before signing anything. No governmental agency has judged the merits or value, if any, of this property. This material shall not constitute an offer to sell in any state where prior registration is required.

SILO RIDGE FIELD CLUB